

An abstract graphic design on a dark gray background. It features several sets of parallel lines in different colors: teal, pink, yellow, light blue, and light gray. The lines are arranged in a way that suggests a woven or braided pattern, with some lines crossing over others. The lines are oriented diagonally across the frame.

Color Sample Nanotex

Color Sample Nanotex



Nanotex
1001



Nanotex
1002



Nanotex
1003



Nanotex
1004



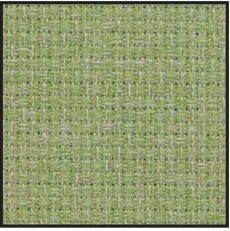
Nanotex
1005



Nanotex
1006



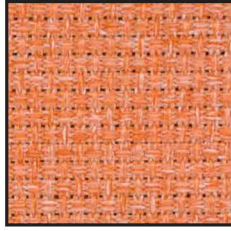
Nanotex
1007



Nanotex
1008



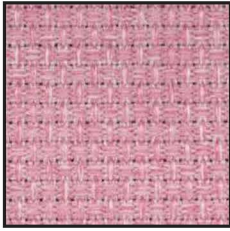
Nanotex
1009



Nanotex
1010



Nanotex
1011



Nanotex
1012



Nanotex
1013



Nanotex
1014



Nanotex
1015



Nanotex
1016



Nanotex
1017



Nanotex
1018



Nanotex
1019



Nanotex
1020

Color Sample Nanotex



Nanotex
1021



Nanotex
1022



Nanotex
1023



Nanotex
1024



Nanotex
1025



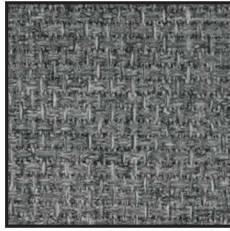
Nanotex
1026



Nanotex
1027



Nanotex
1028



Nanotex
1029



Nanotex
1030